



The Expolux range of luminaires illuminates signs or advertising surfaces to a high level of uniformity. The light emitted by an LED module is directed asymmetrically by a special lens onto the surface. High levels of illumination are achieved with very low power consumption. Innovative LED technology is put to good use.

The low profile housing is very compact and only needs to be tilted very little thanks to the asymmetrical distribution lens. Together with the short arm, the overall impression is a very discreet luminaire. But one which can make any sign or advertising surface stand out.



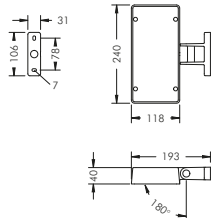
Advertising surfaces of various dimensions can be illuminated uniformly and economically. The luminaires themselves blend discreetly into the background.



An advertising panel measuring 2 x 2 metres can be illuminated using just one sign luminaire. Luminaires with wall washer optics are suitable for façade lighting applications.

There are two different optical systems adapted for sign or façade lighting applications.



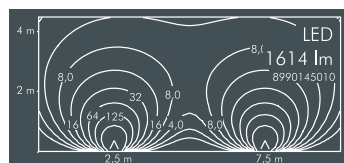
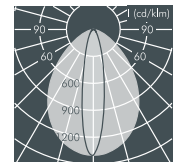
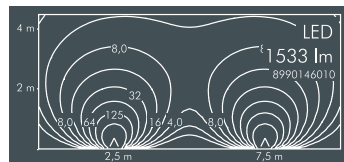


**Expolux**

With a high performance LED module, integral temperature monitoring device, CRI: > 80, Colour tolerance: max. 2 SDCM  
 Service life: L80/B10 > 50 000 h  
 protection class I, IP65 ⚡⚡⚡  
 windage area AW 0.03 m<sup>2</sup>  
 corrosion-resistant die cast aluminium housing AlSi12, polyester powder coated,  
 baton lens made of high efficiency optical silicon, all exterior steel parts are stainless steel,  
 UV stabilised polycarbonate cover, silicon gasket, closure with 4 stainless steel screws, wall mounting plate: 2 drilled holes Ø 7 mm, spacing 78 mm, joint with tilt range 180°, cable entry: M20, integral driver (AC/DC)

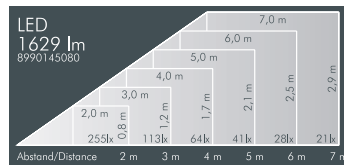
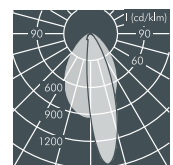
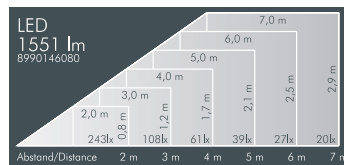
**Expolux, wall washer**

Part number	Colour	Light source	Luminous flux	Beam angle γ (FWHM)	
<b>8 990 146 019</b>	black	1 x LED module 18 W warm white (3000 K)	1533 lm	C 0 – 180	C 90 – 270
<b>8 990 166 019</b>	white			20°	82°
<b>8 990 156 019</b>	silver grey				
Part number	Colour	Light source	Luminous flux	Beam angle γ (FWHM)	
<b>8 990 145 019</b>	black	1 x LED module 18 W neutral white (4000 K)	1614 lm	C 0 – 180	C 90 – 270
<b>8 990 165 019</b>	white			20°	82°
<b>8 990 155 019</b>	silver grey				



**Expolux, asymmetrical beam**

Part number	Colour	Light source	Luminous flux	Beam angle γ (FWHM)	
<b>8 990 146 089</b>	black	1 x LED module 18 W warm white (3000 K)	1551 lm	C 0 – 180	C 90 – 270
<b>8 990 166 089</b>	white			43°	70°
<b>8 990 156 089</b>	silver grey				
Part number	Colour	Light source	Luminous flux	Beam angle γ (FWHM)	
<b>8 990 145 089</b>	black	1 x LED module 18 W neutral white (4000 K)	1629 lm	C 0 – 180	C 90 – 270
<b>8 990 165 089</b>	white			43°	70°
<b>8 990 155 089</b>	silver grey				







Part number	Description
. . . . . 1..	<b>Dimmable luminaire (DALI)</b>
. . . . . 2..	<b>Dimmable luminaire (1-10 V)</b>

LED (see page 185)

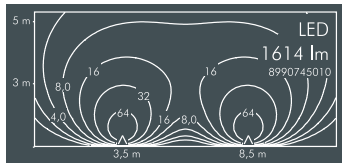
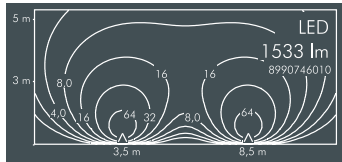
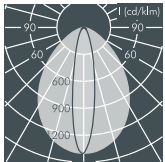
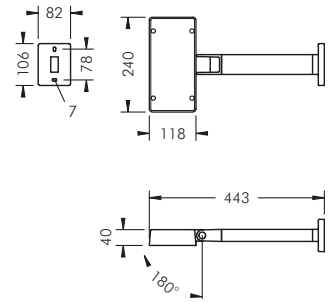
Luminaires available in 2700 K or other colour temperatures on request



## Expolux with wall arm

With a high performance LED module,  
integral temperature monitoring device,  
CRI: > 80, Colour tolerance: max. 2 SDCM  
Service life: L80/B10 > 50 000 h  
protection class I, IP65      
windage area AW 0.04 m<sup>2</sup>

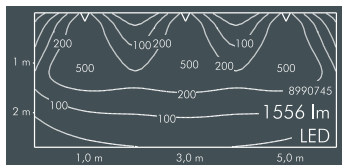
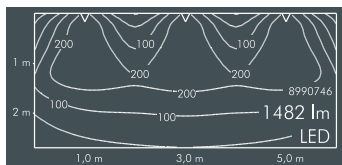
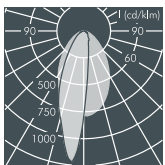
corrosion-resistant die cast aluminium housing AlSi12,  
polyester powder coated,  
baton lens made of high efficiency optical silicon,  
all exterior steel parts are stainless steel,  
UV stabilised polycarbonate cover, silicon gasket,  
closure with 4 stainless steel screws, wall mounting  
plate: 2 drilled holes Ø 7 mm, spacing 78 mm,  
joint with tilt range 180°, cable entry: M20,  
integral driver (AC/DC)



### Expolux, wall washer with wall arm

Part number	Colour	Light source	Luminous flux	Beam angle $\gamma$ (FWHM)	
				C 0 – 180	C 90 – 270
<b>8 990 746 019</b>	black	1 x LED module 18 W warm white (3000 K)	1533 lm	20°	82°
<b>8 990 766 019</b>	white				
<b>8 990 756 019</b>	silver grey				

Part number	Colour	Light source	Luminous flux	Beam angle $\gamma$ (FWHM)	
				C 0 – 180	C 90 – 270
<b>8 990 745 019</b>	black	1 x LED module 18 W neutral white (4000 K)	1614 lm	20°	82°
<b>8 990 765 019</b>	white				
<b>8 990 755 019</b>	silver grey				



### Expolux, sign luminaire

Part number	Colour	Light source	Luminous flux	Beam angle $\gamma$ (FWHM)	
				C 0 – 180	C 90 – 270
<b>8 990 746 009</b>	black	1 x LED module 18 W warm white (3000 K)	1482 lm	15°	41°
<b>8 990 766 009</b>	white				
<b>8 990 756 009</b>	silver grey				

Part number	Colour	Light source	Luminous flux	Beam angle $\gamma$ (FWHM)	
				C 0 – 180	C 90 – 270
<b>8 990 745 009</b>	black	1 x LED module 18 W neutral white (4000 K)	1556 lm	15°	41°
<b>8 990 765 009</b>	white				
<b>8 990 755 009</b>	silver grey				

Part number	Description
... .. 1..	<b>Dimmable luminaire (DALI)</b>
... .. 2..	<b>Dimmable luminaire (1-10 V)</b>

LED (see page 185)

Luminaires available in 2700 K or other colour temperatures on request

