

Design: Roy Fleetwood

Ecovision are luminaires for uniform façade illumination. The special wall washer optics are extremely wide beam in the horizontal plane but narrow beam in the vertical plane. This fans out the light which then grazes up the façade. This makes optimal use of the luminous flux on the area to be illuminated. The shallow profile of the luminaire makes it a very discrete product. Furthermore, the precise optics make it possible to achieve high levels of illumination with low power consumption.



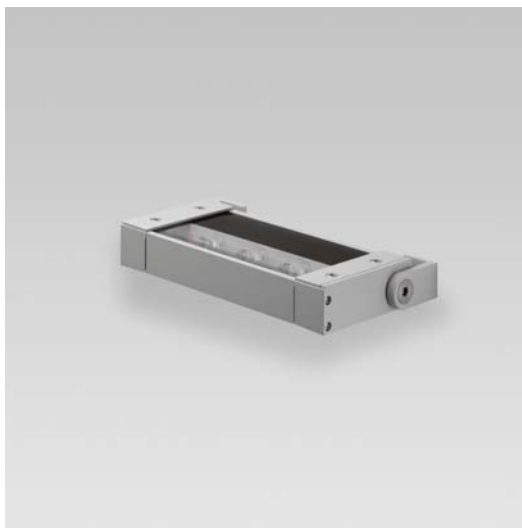
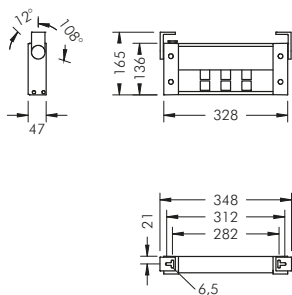
82 Baker Street, London/UK  
Lighting design:  
Tony Rimmer, Studio 29, London




The luminous flux is concentrated in the vertical plane and grazes up the façade with hardly any light pollution.

Precise optics and a shallow housing with excellent heat dissipation properties characterise Ecovision.



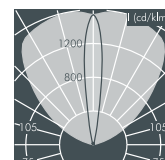
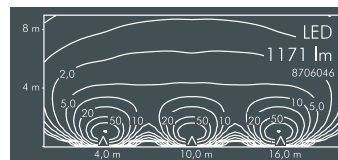


### Ecovision Mini wall washer

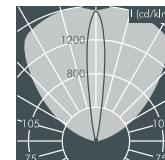
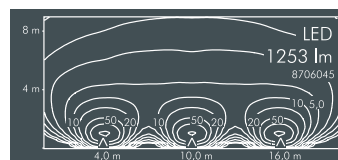
With 6 x 2.5 W high performance LEDs, integral temperature monitoring device, CRI: > 80, Colour tolerance: max. 2 SDCM  
 Service life: L90/B10 > 50 000 h  
 protection class I, IP65 , IK10  
 housing made of extruded aluminium and corrosion-resistant die cast aluminium housing AlSi12, polyester powder coated, all exterior steel parts are stainless steel, polycarbonate cover, silicon gasket, closure by 4 stainless steel screws, mounting flange: 2 drilled holes Ø 6.5 mm, spacing 282 mm, tilt range 120°, PG11 cable gland, integral driver (AC/DC)

#### Ecovision Mini, wall washer

Part number*	Colour	Light source	Luminous flux	Beam angle γ (FWHM)	
<b>8 706 046 009</b>	black	6 x LED 2.5 W warm white (3000 K)	1171 lm	C 0 – 180	C 90 – 270
<b>8 706 066 009</b>	white			15°	103°
<b>8 706 056 009</b>	silver grey				



Part number*	Colour	Light source	Luminous flux	Beam angle γ (FWHM)	
<b>8 706 045 009</b>	black	6 x LED 2.5 W neutral white (4000 K)	1253 lm	C 0 – 180	C 90 – 270
<b>8 706 065 009</b>	white			15°	103°
<b>8 706 055 009</b>	silver grey				



Part number*	Description
. . . . . 1 ..	<b>Dimmable luminaire (DALI)</b>
. . . . . 2 ..	<b>Dimmable luminaire (1-10 V)</b>

\* Luminaires with two cable glands available upon request

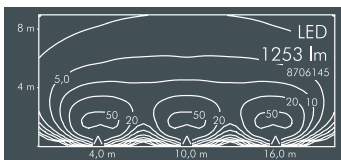
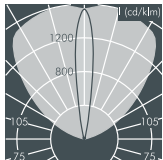
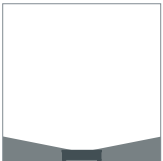
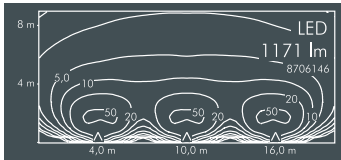
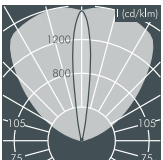
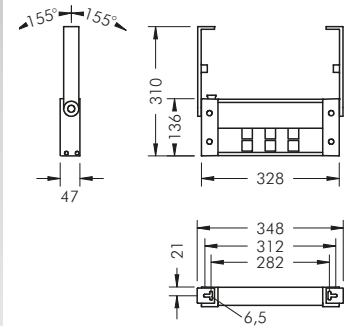
**LED** (see page 185)

Luminaires available in 2700 K and other colour temperatures on request



**Ecovision Mini wall washer with wall arms**

With 6 x 2.5 W high performance LEDs, integral temperature monitoring device, CRI: > 80, Colour tolerance: max. 2 SDCM  
 Service life: L90/B10 > 50 000 h  
 protection class I, IP65  $\blacklozenge$   $\blacktriangle$   $\blacktriangle$ , IK10  
 housing made of extruded aluminium and corrosion-resistant die cast aluminium housing AlSi12, polyester powder coated, all exterior steel parts are stainless steel, polycarbonate cover, silicon gasket, closure by 4 stainless steel screws, wall arms: 2 drilled holes  $\varnothing$  6.5 mm, spacing 282 mm, tilt range 310°, PG11 cable gland, integral driver (AC/DC)



**Ecovision Mini, wall washer with wall arms**

Part number*	Colour	Light source	Luminous flux	Beam angle $\gamma$ (FWHM)	
				C 0 – 180	C 90 – 270
<b>8 706 146 009</b>	black	6 x LED 2.5 W warm white (3000 K)	1171 lm	15°	103°
<b>8 706 166 009</b>	white				
<b>8 706 156 009</b>	silver grey				

Part number*	Colour	Light source	Luminous flux	Beam angle $\gamma$ (FWHM)	
				C 0 – 180	C 90 – 270
<b>8 706 145 009</b>	black	6 x LED 2.5 W neutral white (4000 K)	1253 lm	15°	103°
<b>8 706 165 009</b>	white				
<b>8 706 155 009</b>	silver grey				

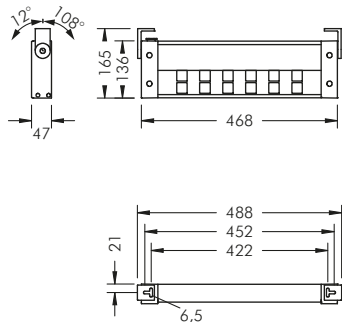
Part number*	Description
..... 1 ..	<b>Dimmable luminaire (DALI)</b>
..... 2 ..	<b>Dimmable luminaire (1-10 V)</b>

\* Luminaires with two cable glands available upon request


LED (see page 185)

Luminaires available in 2700 K and other colour temperatures on request



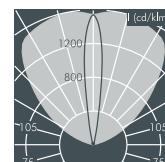
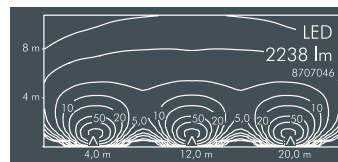


**Ecovision wall washer**

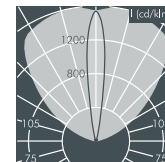
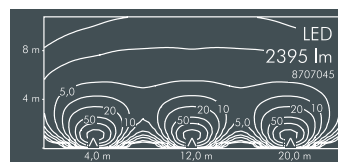
With 12 x 2.5 W high performance LEDs, integral temperature monitoring device, CRI: > 80, Colour tolerance: max. 2 SDCM  
 Service life: L90/B10 > 50 000 h  
 protection class I, IP65 , IK10  
 housing made of extruded aluminium and corrosion-resistant die cast aluminium housing AlSi12, polyester powder coated, all exterior steel parts are stainless steel, polycarbonate cover, silicon gasket, closure by 4 stainless steel screws, mounting flange: 2 drilled holes Ø 6.5 mm, spacing 422 mm, tilt range 120°, PG11 cable gland, integral driver (AC/DC)

**Ecovision, wall washer**

Part number*	Colour	Light source	Luminous flux	Beam angle γ (FWHM)	
<b>8 707 046 009</b>	black	12 x LED 2.5 W warm white (3000 K)	2238 lm	C 0 – 180	C 90 – 270
<b>8 707 066 009</b>	white			15°	103°
<b>8 707 056 009</b>	silver grey				



Part number*	Colour	Light source	Luminous flux	Beam angle γ (FWHM)	
<b>8 707 045 009</b>	black	12 x LED 2.5 W neutral white (4000 K)	2395 lm	C 0 – 180	C 90 – 270
<b>8 707 065 009</b>	white			15°	103°
<b>8 707 055 009</b>	silver grey				



Part number*	Description
. . . . . 1..	<b>Dimmable luminaire (DALI)</b>
. . . . . 2..	<b>Dimmable luminaire (1-10 V)</b>

\* Luminaires with two cable glands available upon request

**Upon request these luminaires are available with 12 x LED 1.5 W for high ambient temperature (tmax 50 °C).**

**LED** (see page 185)

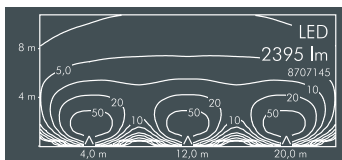
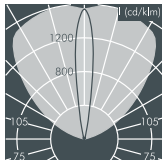
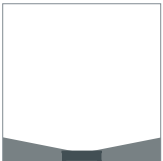
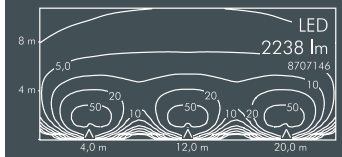
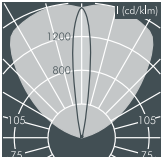
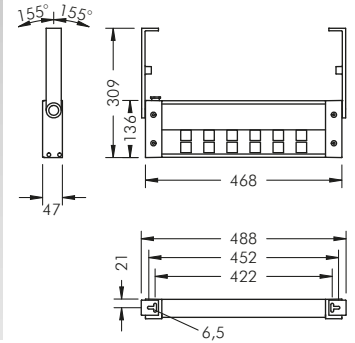
Luminaires available in 2700 K and other colour temperatures on request



**Ecovision**

**wall washer with wall arms**

With 12 x 2.5 W high performance LEDs,  
 integral temperature monitoring device,  
 CRI: > 80, Colour tolerance: max. 2 SDCM  
 Service life: L90/B10 > 50 000 h  
 protection class I, IP65  $\blacklozenge$   $\blacktriangle$   $\blacktriangle$ , IK10  
 housing made of extruded aluminium and  
 corrosion-resistant die cast aluminium housing AlSi12,  
 polyester powder coated,  
 all exterior steel parts are stainless steel,  
 polycarbonate cover, silicon gasket,  
 closure by 4 stainless steel screws,  
 wall arms: 2 drilled holes  $\varnothing$  6.5 mm,  
 spacing 422 mm, tilt range 310°,  
 PG11 cable gland, integral driver (AC/DC)



**Ecovision, wall washer with wall arms**

Part number*	Colour	Light source	Luminous flux	Beam angle $\gamma$ (FWHM)	
				C 0 – 180	C 90 – 270
<b>8 707 146 009</b>	black	12 x LED 2.5 W warm white (3000 K)	2238 lm	15°	103°
<b>8 707 166 009</b>	white				
<b>8 707 156 009</b>	silver grey				

Part number*	Colour	Light source	Luminous flux	Beam angle $\gamma$ (FWHM)	
				C 0 – 180	C 90 – 270
<b>8 707 145 009</b>	black	12 x LED 2.5 W neutral white (4000 K)	2395 lm	15°	103°
<b>8 707 165 009</b>	white				
<b>8 707 155 009</b>	silver grey				

Part number*	Description
... .. 1 ..	<b>Dimmable luminaire (DALI)</b>
... .. 2 ..	<b>Dimmable luminaire (1-10 V)</b>

\* Luminaires with two cable glands available upon request

**Upon request these luminaires are available with 12 x LED 1.5 W for high ambient temperature (t<sub>max</sub> 50°C).**

LED (see page 185)

Luminaires available in 2700 K and other colour temperatures on request

